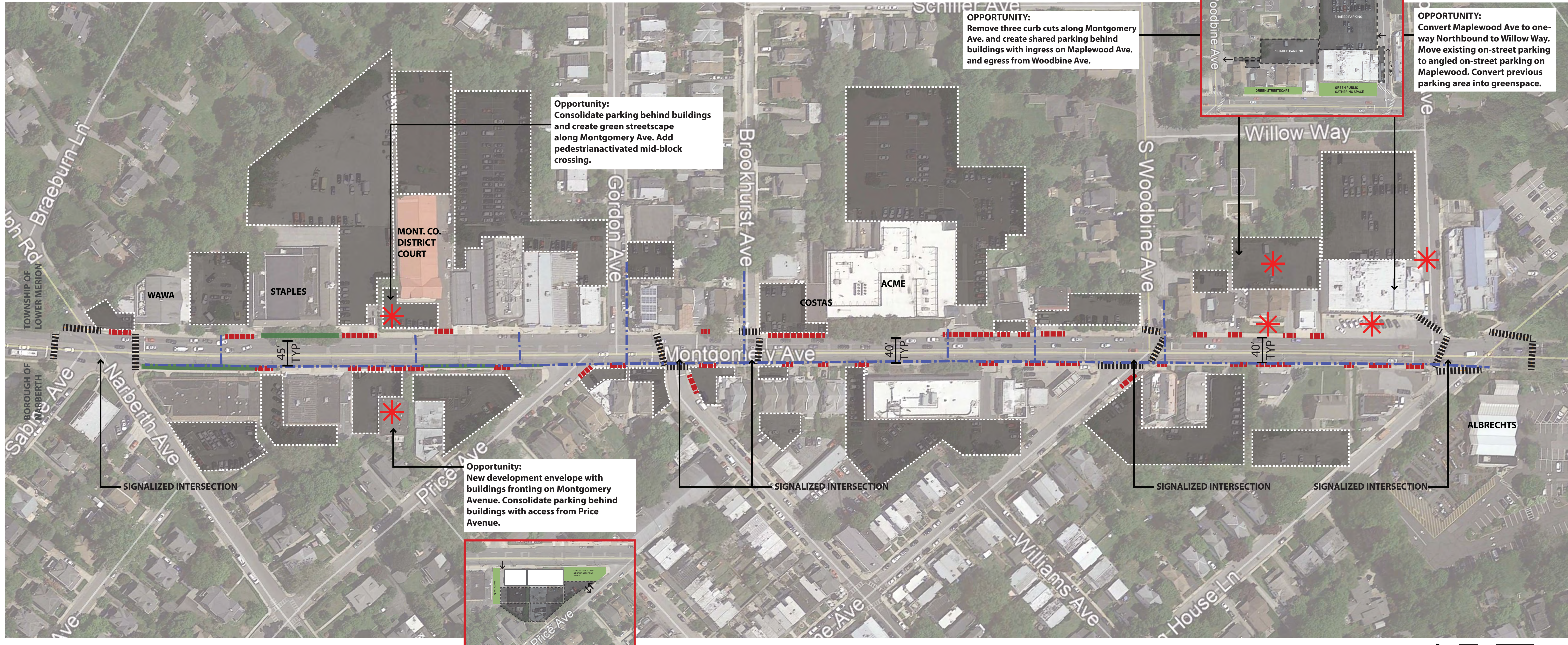


MONTGOMERY AVENUE STREETScape

Old Gulph Road to Meeting House Lane

12.21.2017

DESIGN OPPORTUNITIES & SITE CONSTRAINTS



EXISTING CONDITIONS SITE PHOTOS



Narrow sidewalks, low curbs adjacent to roadway, buildings and vehicular parking that protrude into the right of way, and utility infrastructure located in the right of way create an unwelcoming and unsafe pedestrian experience.

Deteriorating physical condition of sidewalks and curbs create unsafe pedestrian conditions.

Wide and awkward intersection geometry, landings that do not meet ADA code, and many curb cuts create a poor pedestrian experience.

LEGEND

- - - - - CURB CUT / DRIVEWAY
- - - - - ON-STREET PARKING
- - - - - OVERHEAD UTILITIES
- CROSSWALK
- OFF-STREET PARKING LOT
- VEGETATIVE BUFFER BETWEEN SIDEWALK AND ROAD
- * SITE OPPORTUNITY

